



Components

Components	Pcs	Material
Body	1	UNI EN 12165 CW617N-DW UNI EN 12164 CW617N-DW for models: - Bibcock for washing machine - Drain bibcock - Oil bibcock UNI EN 12165 CW617N-DW UNI EN 12164 CW614N for models: - Bibcock with washing machine fitting - Bibcock Classic
End sleeve	1	UNI EN 12165 CW617N - DW UNI EN 12164 CW617N - DW
Ball	1	UNI EN 12164 CW617N - DW
Ball seal seats	2	P.T.F.E.
Stem	1	UNI EN 12164 CW617N - DW
Stem seal O-Ring	2	EPDM Peroxidic 70 Sh A (ASTM D2240) for models: - Bibcock for washing machine - Drain bibcock - Oil bibcock NBR 70 Sh A (ASTM D2240) for models: - Bibcock with washing machine fitting - Bibcock Classic
Lever (FOR WASHING MACHINES)	1	Chromed ABS
Lever (FOR DRAIN BOXES AND OIL)	1	Painted aluminium
Screw	1	Zinc-plated Steel

EN GENERAL CHARACTERISTICS

Bore: See drawing.
Range: From 3/8" to 1/2"
Male fitting: Thread UNI EN ISO 228/1 (DIN 259)
Functioning: 90° rotation of operating device.
Operating device: ABS or Aluminium lever with open/close indicators.

OPERATING CONDITIONS

Flow direction: Both ways.
Minimum and maximum operating temperature: -20 °C/+90 °C **
Maximum pressure (T=90 °C): 10 bar
Nominal pressure (T=20 °C): See tables below
** In absence of steam; for temperatures below 0 °C use mixes of water and glycol.

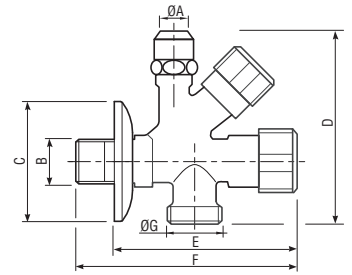
Valves must be used in fully open or fully closed position.

These valves must be used with the pressure set forth in the catalogue and are suitable for domestic hot and cold water distribution systems (Ref. Directive 2014/68/EU, art. 13). For special uses (in compliance with the pressures set out for these valves and the compatibility of the different fluids with the materials making up the valve) see chemical compatibility chart in the technical annexes of the current catalogue. The CW617N-DW brass, the Teflon (P.T.F.E.), and the O-Rings in EPDM Peroxidic in contact with the fluid, are in compliance with the Italian Ministerial Decree n. 174 (dated 06/04/2004).

GP 2016
BIBCOCK



Bibcock with washing machine fitting, chrome-plated.

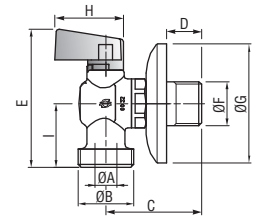


CODE	Size	ØA mm	B	ØC mm	D mm	E mm	F mm	ØG mm	gr	PN	Pack pcs/box	Master pcs/box
7702C004	1/2" x 3/4"	10	G 1/2"	56	87	87	105	3/4"	305	10	12	48

GP 2120
BIBCOCK



Chrome-plated bibcock for washing machines, with rosette.

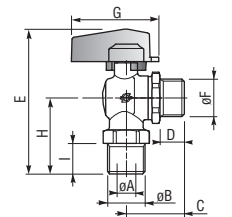


CODE	Size	DN	øA mm	øB	C mm	Dmin mm	Dmax mm	E mm	øF	øG mm	I mm	gr	PN	Pack pcs/box	Master pcs/box
7700C025	1/2" x 1/2"	15	10	1/2"	45	8	16	65	1/2"	56	30	155	10	24	96
7700C026	1/2" x 3/4"	15	10	3/4"	45	8	16	65	1/2"	56	30	162	10	24	96

GP 2120
BIBCOCK



Right angle ball bibcock for drain boxes, nickel-plated.

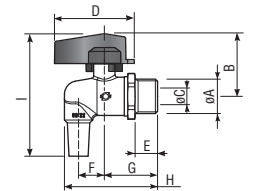


CODE	Size	DN	øA mm	B	C mm	D mm	E mm	øF	G mm	H mm	I mm	gr	PN	Pack pcs/box	Master pcs/box
8834R025	1/2" x 1/2"	15	10	1/2"	32,5	13,5	79,6	1/2"	48	42	17	159	10	48	192

GP 2120
BIBCOCK



Angle bibcocks for Oil canister with black handle.

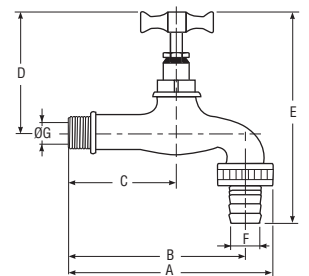


CODE	Size	DN	øA mm	B mm	øC mm	D mm	E mm	F mm	G mm	H mm	I mm	gr	PN	Pack pcs/box	Master pcs/box
8260R004	1/2"	10	1/2"	37,6	10	48	13,5	15,5	32,5	56,5	73,5	162	10	40	160

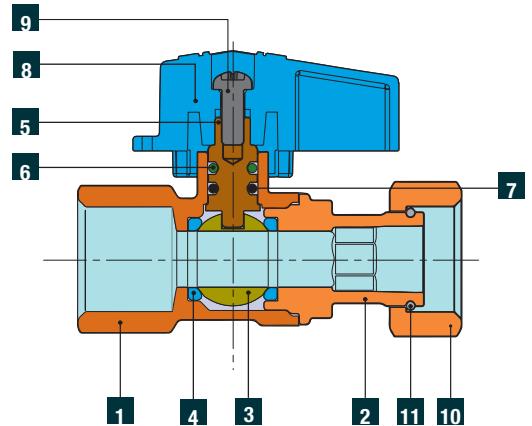
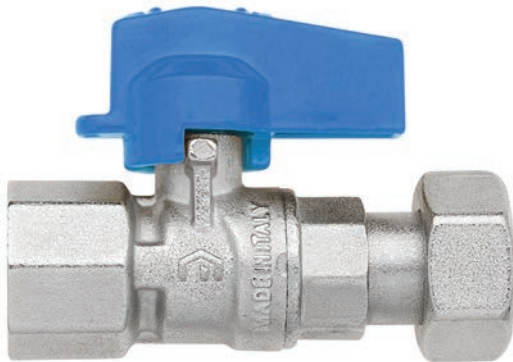
GP 2016
BIBCOCK



Hose end bibcock, sandblasted.



CODE	Size	A mm	B mm	C mm	D mm	E mm	F mm	øG	gr	PN	Pack pcs/box	Master pcs/box
08027312	1/2" x 3/4"	113	98	60	69	121	15	10	270	20	20	80
08027334	3/4" x 1"	130	115	67	88	155	20	16	505	20	12	48



Components

Components	Pcs	Material
1 Body	1	UNI EN 12165 CW617N - DW
2 End sleeve	1	UNI EN 12165 CW617N - DW
3 Ball	1	UNI EN 12165 CW617N - DW UNI EN 12164 CW617N - DW
4 Ball seal seats	2	P.T.F.E.
5 Stem	1	UNI EN 12164 CW617N - DW
6 Stem upper seal O-Ring	1	VITON 70 Sh A (ASTM D2240)
7 Stem lower seal O-Ring	1	EPDM Peroxidic 70 Sh A (ASTM D2240)
8 Aluminium butterfly handle	1	AL, painted
9 Screw	1	Zinc-plated Steel
10 Swivel nut	1	UNI EN 12165 CW617N - DW UNI EN 12164 CW617N - DW
11 Elastic ring	1	CARB. STEEL EN 10270/1 SM

EN GENERAL CHARACTERISTICS

Bore: Total
 Range: 1/2"
 Female fitting: Thread UNI EN 10226 (UNI EN ISO 7/1 Rp) (DIN 2999)
 Male fitting: Thread UNI EN 10226 (UNI EN ISO 7/1 R) (DIN 2999)
 Tang and Nut: Thread UNI EN ISO 228/1 (DIN 259)
 Functioning: 90° degrees rotation of operating device.
 Operating device: Aluminium lever handle.

OPERATING CONDITIONS

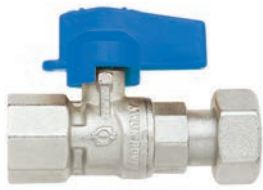
Flow direction: Both ways.
 Minimum and maximum operating temperature: -20 °C/+120 °C **
 Maximum pressure (T=120 °C): 10 bar
 Nominal pressure (T=20 °C): 10 bar
 ** In absence of steam; for temperatures below 0 °C use mixes of water and glycol.

Valves must be used in fully open or fully closed position.

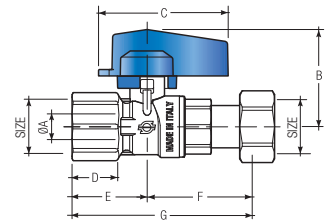
These valves must be used with the pressure set forth in the catalogue and are suitable for domestic hot and cold water distribution systems (Ref. Directive 2014/68/EU, art. 13). For special uses (in compliance with the pressures set out for these valves and the compatibility of the different fluids with the materials making up the valve) see chemical compatibility chart in the technical annexes of the current catalogue.

The CW617N-DW brass, the Teflon (P.T.F.E.), and the O-Rings in EPDM Peroxidic in contact with the fluid, are in compliance with the Italian Ministerial Decree n. 174 (dated 06/04/2004).

GP 2140
BIBCOCK



Female-swivel nut straight ball bibcock, with blue aluminum lever handle.



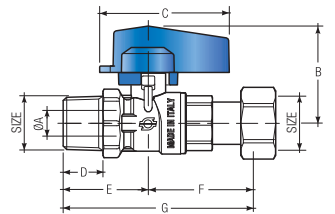
CODE	Size	øA mm	B mm	C mm	D mm	E mm	F mm	G mm	gr	Pack pcs/box	Master pcs/box
8124R076	1/2"F x 1/2"D	10	37.6	48	17	28	39	67	167	20	160

Body threads: Rp (UNI EN 10226-1)
Swivel nut threads: G (UNI EN ISO 228-1)

GP 2140
BIBCOCK



Male-swivel nut straight ball bibcock, with blue aluminum lever handle.



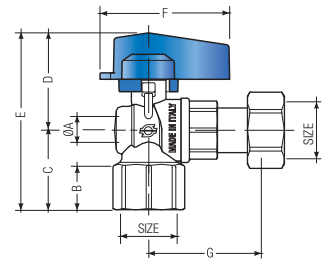
CODE	Size	øA mm	B mm	C mm	D mm	E mm	F mm	G mm	gr	Pack pcs/box	Master pcs/box
8125R076	1/2"M x 1/2"D	10	37.6	48	14.8	31.75	39	70.75	171	20	160

Body threads: R (UNI EN 10226-1)
Swivel nut threads: G (UNI EN ISO 228-1)

GP 2140
BIBCOCK



Female-swivel nut angle ball bibcock, with blue aluminum lever handle.



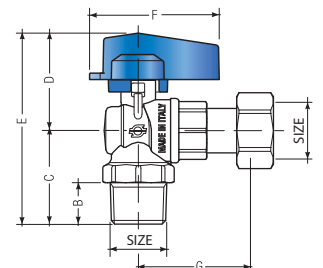
CODE	Size	øA mm	B mm	C mm	D mm	E mm	F mm	G mm	gr	Pack pcs/box	Master pcs/box
8130R076	1/2"F x 1/2"D	10	17	31	37.6	68.6	48	39	174	20	160

Body threads: Rp (UNI EN 10226-1)
Swivel nut threads: G (UNI EN ISO 228-1)

GP 2140
BIBCOCK



Male-swivel nut angle ball bibcock, with blue aluminum lever handle.



CODE	Size	A mm	B mm	C mm	D mm	E mm	F mm	G mm	gr	Pack pcs/box	Master pcs/box
8131R076	1/2"M x 1/2"D	10	14.8	34.5	37.6	72.1	48	39	177	20	160

Body threads: R (UNI EN 10226-1)
Swivel nut threads: G (UNI EN ISO 228-1)