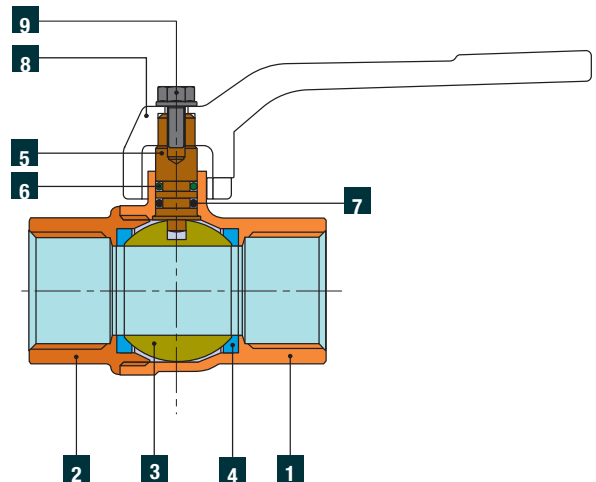


# EVOLUTION

BALL VALVES SIZES FROM 1/4" TO 2", 4"



## Components

	Components	Pcs	Material
1	Body	1	UNI EN 12165 CW617N - DW
2	End sleeve	1	UNI EN 12165 CW617N - DW
3	Ball	1	UNI EN 12165 CW617N - DW UNI EN 12164 CW617N - DW
4	Ball seal seats	2	P.T.F.E.
5	Stem	1	UNI EN 12164 CW617N - DW
6	Stem upper seal O-Ring	1	VITON 70 Sh A (ASTM D2240)
7	Stem lower seal O-Ring	1	EPDM Peroxidic 70 Sh A (ASTM D2240)
8	Aluminum lever handle	1	AL, painted
	Steel lever handle	1	Steel ZN, plastic-covered
	Alluminium butterfly handle	1	AL, painted
9	Screw	1	Zinc-plated Steel
	Nut	1	Zinc-plated Steel
*	Nut	1	UNI EN 12165 CW617N - DW UNI EN 12164 CW617N - DW
*	Tang	1	UNI EN 12165 CW617N - DW UNI EN 12164 CW617N - DW
*	O-ring tang seal	1	EPDM Peroxidic 70 Sh A (ASTM D2240)

(\*) With Pipe union

## A ACCESSORIES

See Spacing kit for lever handle

## EN GENERAL CHARACTERISTICS

Bore: Total  
 Range: From 1/4" to 4"  
 Female fitting from 3/8" to 2": Thread UNI EN 10226 (UNI EN ISO 7/1 Rp) (DIN 2999)  
 Female fitting from 2"1/2 to 4": Thread UNI EN ISO 228/1 (DIN 259)  
 Male fitting: Thread UNI EN 10226 (UNI EN ISO 7/1 R) (DIN 2999)  
 Tang and Nut: Thread UNI EN ISO 228/1 (DIN 259)  
 Functioning: 90° degrees rotation of operating device.  
 Operating device: Aluminium or steel lever handles, aluminium Butterfly.

## OPERATING CONDITIONS

Flow direction: Both ways.  
 Minimum and maximum operating temperature: -20 °C/+120 °C \*\*  
 Maximum pressure (T=120 °C): 10 bar  
 Nominal pressure (T=20 °C): See tables below  
 \*\* In absence of steam; for temperatures below 0 °C use mixes of water and glycol.

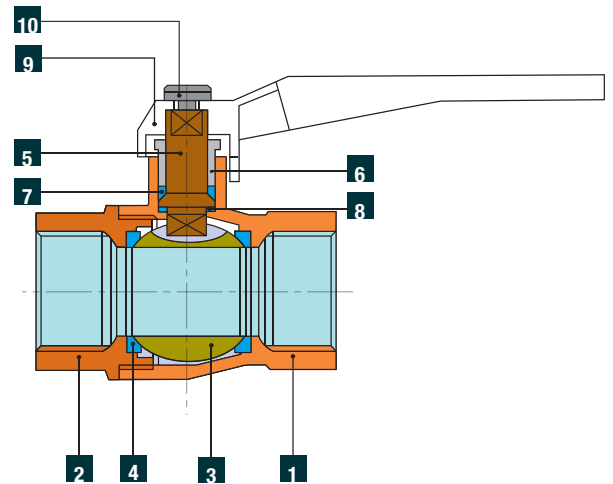
Valves must be used in fully open or fully closed position.

These valves must be used with the pressure set forth in the catalogue and are suitable for domestic hot and cold water distribution systems (Ref. Directive 2014/68/EU, art. 13). From size 1 "1/4 they must not be used for fluids of group 1 (substances and mixes classified as dangerous).

For special uses (in compliance with the pressures set out for these valves and the compatibility of the different fluids with the materials making up the valve) see chemical compatibility chart in the technical annexes of the current catalogue. The CW617N-DW brass, the Teflon (P.T.F.E.), and the O-Rings in EPDM Peroxidic in contact with the fluid, are in compliance with the Italian Ministerial Decree n. 174 (dated 06/04/2004).

**NEW**  
**EVOLUTION**

BALL VALVES SIZES FROM 2"1/2 TO 3"



**Components**

	<b>Pz.</b>	<b>Material</b>
<b>1</b> Body	1	CW617N-UNI-EN 12165
<b>2</b> End connection	1	CW617N-UNI-EN 12165
<b>3</b> Ball	1	DELTA C EN1982 CB 745S
<b>4</b> Ball seals	2	P.T.F.E. virgin
<b>5</b> Stem	1	CW617N-UNI-EN 12164
<b>6</b> Gland	1	CW617N-UNI-EN 12164
<b>7</b> Stem seal ring	1	P.T.F.E.
<b>8</b> Anti-friction washer	1	P.T.F.E.
<b>9</b> Lever	1	Aluminum plastified with red epoxy resin
<b>10</b> Screw	1	Zinc-plated Steel

**EN GENERAL CHARACTERISTICS**

Bore: Total  
 Range: From 2"1/2 to 3"  
 Female end from 2"1/2 to 3": Thread UNI EN ISO 228/1 (DIN 259)  
 Functioning: 90° degrees rotation of operating device.  
 Operating device: plasticified aluminium lever handle.

**OPERATING CONDITIONS**

Flow direction: Both ways  
 Maximum operating temperature: 120 °C \*\*  
 Maximum pressure (T=120 °C): 10 bar  
 Nominal pressure (T=20 °C): 10 bar  
 \*\* In absence of steam.

Valves must be used in fully open or fully closed position.

These valves must be used with the pressure set forth in the catalogue and are suitable for domestic hot and cold water distribution systems (Ref. Directive 2014/68/EU, art. 13). They must not be used for fluids of group 1 (substances and mixes classified as dangerous).

For special uses (in compliance with the pressures set out for these valves and the compatibility of the different fluids with the materials making up the valve) see chemical compatibility chart in the technical annexes of the current catalogue. The CW617N, DELTA C EN1982 CB 745S brass and the Teflon (P.T.F.E.) in contact with the fluid, are in compliance with the Italian Ministerial Decree n. 174 (dated 06/04/2004).

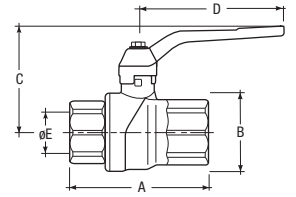
GP 2240  
GP 2210  
EVOLUTION



Female-Female nickel-plated ball valve, with painted aluminum lever handle.

(\* Note: 2"1/2 - 3" - 4" valves are with threading ISO 228/1 and are supplied with levers disassembled.

(\*\*) Articles available while stocks last.



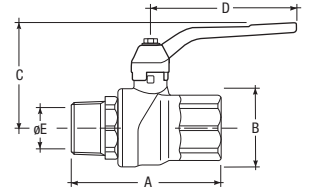
**A**

CODE	Size	A mm	øB mm	C mm	D mm	øE mm	gr	PN	Pack pcs/box	Master pcs/box
<b>BLUE VERSION</b>										
80001014	1/4"	45	26	47	85	10	140	50	36	144
80001038	3/8"	47	26	47	85	10	141	50	36	144
80001012	1/2"	56	31	49	85	15	175	50	36	144
80001034	3/4"	67	38	53	85	20	280	40	24	96
80001100	1"	80	46	63	105	25	460	30	12	48
80001114	1"1/4	94	57	69	105	32	675	25	8	32
80001112	1"1/2	103	68	86	135	40	987	25	4	16
80001200	2"	126	85	94	135	50	1650	16	4	16
80001212	2"1/2 (*) (**)	127	110	119	240	64	3060	15	1	8
<b>NEW</b> 80002212	2"1/2	130	-	112	270	63	2850	10	1	10
<b>NEW</b> 80002300	3"	150	-	123	270	76	3635	10	1	8
80001400	4" (*)	185,5	164	153	300	100	7835	15	1	2
<b>RED VERSION</b>										
86001014	1/4"	45	26	47	85	10	140	50	36	144
86001038	3/8"	47	26	47	85	10	141	50	36	144
86001012	1/2"	56	31	49	85	15	175	50	36	144
86001034	3/4"	67	38	53	85	20	280	40	24	96
86001100	1"	80	46	63	105	25	460	30	12	48
86001114	1"1/4	94	57	69	105	32	675	25	8	32
86001112	1"1/2	103	68	86	135	40	987	25	4	16
86001200	2"	126	85	94	135	50	1650	16	4	16
<b>NEW</b> 86002212	2"1/2	130	-	112	270	63	2850	10	1	10
<b>NEW</b> 86002300	3"	150	-	123	270	76	3635	10	1	8
08007400	4" (*)	185,5	164	153	300	100	7835	15	1	2
<b>BLACK VERSION</b>										
81001012	1/2"	56	31	49	85	15	175	50	36	144
81001034	3/4"	67	38	53	85	20	280	40	24	96
81001100	1"	80	46	63	105	25	460	30	12	48
81001114	1"1/4	94	57	69	105	32	675	25	8	32
81001112	1"1/2	103	68	86	135	40	987	25	4	16
81001200	2"	126	85	94	135	50	1650	16	4	16
08107212	2"1/2 (*) (**)	127	110	119	240	64	3060	15	1	8
<b>NEW</b> 81002212	2"1/2	130	-	112	270	63	2850	10	1	10
08107300	3" (*) (**)	149	135	129	240	76	3970	15	1	6
<b>NEW</b> 81002300	3"	150	-	123	270	76	3635	10	1	8
08107400	4" (*)	185,5	164	153	300	100	7835	15	1	2

GP 2240  
EVOLUTION



Male-Female nickel-plated ball valve, with painted aluminum lever handle.



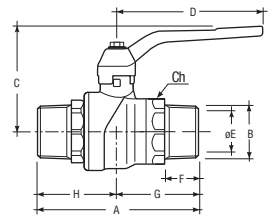
**A**

CODE	Size	A mm	øB mm	C mm	D mm	øE mm	gr	PN	Pack pcs/box	Master pcs/box
<b>BLUE VERSION</b>										
80004014	1/4"	51	26	47	85	10	146	50	36	144
80004038	3/8"	52	26	47	85	10	160	50	36	144
80004012	1/2"	60	31	49	85	15	181	50	36	144
80004034	3/4"	70	38	53	85	20	287	40	24	96
80004100	1"	83	46	63	105	25	510	30	12	48
80004114	1"1/4	97	57	69	105	32	710	25	8	32
80004112	1"1/2	110	68	86	135	40	1080	25	4	16
80004200	2"	134	85	94	135	50	1700	16	4	16
<b>RED VERSION</b>										
86004014	1/4"	51	26	47	85	10	146	50	36	144
86004038	3/8"	52	26	47	85	10	160	50	36	144
86004012	1/2"	60	31	49	85	15	181	50	36	144
86004034	3/4"	70	38	53	85	20	287	40	24	96
86004100	1"	83	46	63	105	25	510	30	12	48
86004114	1"1/4	97	57	69	105	32	710	25	8	32
86004112	1"1/2	110	68	86	135	40	1080	25	4	16
86004200	2"	134	85	94	135	50	1700	16	4	16
<b>BLACK VERSION</b>										
81004012	1/2"	60	31	49	85	15	181	50	36	144
81004034	3/4"	70	38	53	85	20	287	40	24	96
81004100	1"	83	46	63	105	25	510	30	12	48
81004114	1"1/4	97	57	69	105	32	710	25	8	32
81004112	1"1/2	110	68	86	135	40	1080	25	4	16
81004200	2"	134	85	94	135	50	1700	16	4	16

GP 2240  
EVOLUTION



Male-Male nickel-plated ball valve, with painted aluminum lever handle.

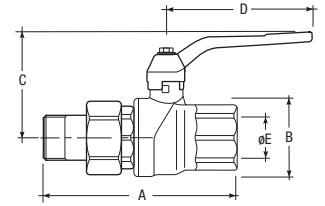


CODE	Size	DN	A mm	øB mm	C mm	D mm	øE mm	F mm	G mm	H mm	Ch1 mm	gr	PN	Pack pcs/box	Master pcs/box
<b>BLUE VERSION</b>															
6046R104	1/2"	15	61	1/2"	49,5	85	15	14,8	29	32	25	185	50	36	144
6046R105	3/4"	20	71,3	3/4"	53	85	20	16,5	34,5	36,8	31	295	40	24	96
6046R106	1"	25	83	1"	63	105	25	19,5	40	43	38	475	30	12	48
<b>RED VERSION</b>															
6004R104	1/2"	15	61	1/2"	49,5	85	15	14,8	29	32	25	185	50	36	144
6004R105	3/4"	20	71,3	3/4"	53	85	20	16,5	34,5	36,8	31	295	40	24	96
6004R106	1"	25	83	1"	63	105	25	19,5	40	43	38	475	30	12	48

GP 2240  
EVOLUTION



Female-Pipe union nickel-plated ball valve, with painted aluminum lever handle.



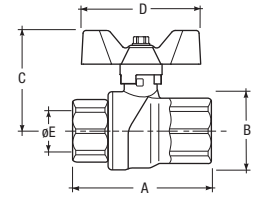
**A**

CODE	Size	A mm	øB mm	C mm	D mm	øE mm	gr	PN	Pack pcs/box	Master pcs/box
<b>BLUE VERSION</b>										
80005013	1/2"	82	31	49	85	15	245	50	24	96
80005035	3/4"	94	38	53	85	20	395	40	18	72
80005101	1"	109	46	63	105	25	650	30	12	48
80005115	1 1/4"	125	57	69	105	32	880	25	8	32
<b>RED VERSION</b>										
86005013	1/2"	82	31	49	85	15	245	50	24	96
86005035	3/4"	94	38	53	85	20	395	40	18	72
86005101	1"	109	46	63	105	25	650	30	12	48
86005115	1 1/4"	125	57	69	105	32	880	25	8	32

GP 2240  
EVOLUTION



Female-Female nickel-plated ball valve, with painted aluminum butterfly handle.



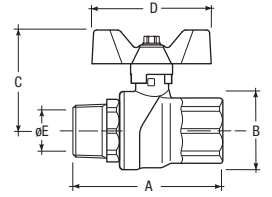
**A**

CODE	Size	A mm	øB mm	C mm	D mm	øE mm	gr	PN	Pack pcs/box	Master pcs/box
<b>BLUE VERSION</b>										
80001015	1/4"	45	26	42	60	10	140	50	36	144
80001039	3/8"	47	26	42	60	10	140	50	36	144
80001013	1/2"	56	31	46	60	15	175	50	36	144
80001035	3/4"	67	38	49	60	20	280	40	24	96
80001101	1"	80	46	56	65	25	455	30	12	48
80001115	1 1/4"	94	57	62	65	32	660	25	8	32
<b>RED VERSION</b>										
86001015	1/4"	45	26	42	60	10	140	50	36	144
86001039	3/8"	47	26	42	60	10	140	50	36	144
86001013	1/2"	56	31	46	60	15	175	50	36	144
86001035	3/4"	67	38	49	60	20	280	40	24	96
86001101	1"	80	46	56	65	25	455	30	12	48
86001115	1 1/4"	94	57	62	65	32	660	25	8	32
<b>BLACK VERSION</b>										
81001013	1/2"	56	31	46	60	15	175	50	36	144
81001035	3/4"	67	38	49	60	20	280	40	24	96
81001101	1"	80	46	56	65	25	455	30	12	48
81001115	1 1/4"	94	57	62	65	32	660	25	8	32

GP 2240  
EVOLUTION

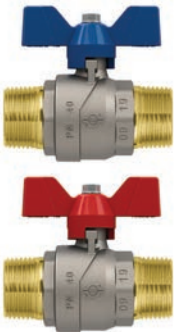


Male-Female nickel-plated ball valve, with painted aluminum butterfly handle.

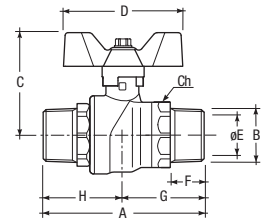


CODE	Size	A mm	øB mm	C mm	D mm	øE mm	gr	PN	Pack pcs/box	Master pcs/box
<b>BLUE VERSION</b>										
80004015	1/4"	51	26	42	60	10	140	50	36	144
80004039	3/8"	52	26	42	60	10	140	50	36	144
80004013	1/2"	60	31	46	60	15	180	50	36	144
80004035	3/4"	70	38	49	60	20	290	40	24	96
80004101	1"	83	46	56	65	25	470	30	12	48
80004115	1 1/4"	97	57	62	65	32	720	25	8	32
<b>RED VERSION</b>										
86004015	1/4"	51	26	42	60	10	140	50	36	144
86004039	3/8"	52	26	42	60	10	140	50	36	144
86004013	1/2"	60	31	46	60	15	180	50	36	144
86004035	3/4"	70	38	49	60	20	290	40	24	96
86004101	1"	83	46	56	65	25	470	30	12	48
86004115	1 1/4"	97	57	62	65	32	720	25	8	32
<b>BLACK VERSION</b>										
81004013	1/2"	60	31	46	60	15	180	50	36	144
81004035	3/4"	70	38	49	60	20	290	40	24	96
81004101	1"	83	46	56	65	25	470	30	12	48
81004115	1 1/4"	97	57	62	65	32	720	25	8	32

GP 2240  
EVOLUTION



Male-Male nickel-plated ball valve, with painted aluminum butterfly handle.



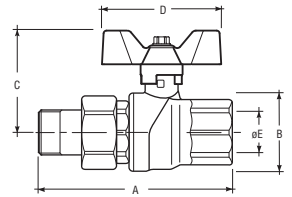
CODE	Size	DN mm	A mm	øB mm	C mm	D mm	øE mm	F mm	G mm	H mm	Ch1 mm	gr	PN	Pack pcs/box	Master pcs/box
<b>BLUE VERSION</b>															
6041R104	1/2"	15	61	1/2"	14,8	60	15	46	29	32	25	185	50	36	144
6041R105	3/4"	20	71,3	3/4"	16,5	60	20	49,5	34,5	36,8	31	295	40	24	96
6041R106	1"	25	83	1"	19,5	65	25	56	40	43	38	475	30	12	48
<b>RED VERSION</b>															
6021R104	1/2"	15	61	1/2"	14,8	60	15	46	29	32	25	185	50	36	144
6021R105	3/4"	20	71,3	3/4"	16,5	60	20	49,5	34,5	36,8	31	295	40	24	96
6021R106	1"	25	83	1"	19,5	65	25	56	40	43	38	475	30	12	48

**A**

GP 2240  
EVOLUTION



Female-Pipe union nickel-plated ball valve, with painted aluminum butterfly handle.



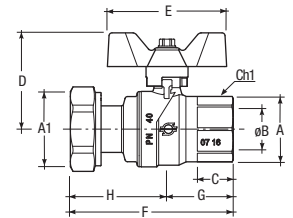
A

CODE	Size	A mm	øB mm	C mm	D mm	øE mm	gr	PN	Pack pcs/box	Master pcs/box
<b>BLUE VERSION</b>										
80005012	1/2"	82	31	46	60	15	248	50	36	144
80005034	3/4"	94	38	49	60	20	400	40	24	96
80005100	1"	109	46	56	65	25	646	30	12	48
80005114	1"1/4	125	57	62	65	32	873	25	8	32
<b>RED VERSION</b>										
86005012	1/2"	82	31	46	60	15	248	50	36	144
86005034	3/4"	94	38	49	60	20	400	40	24	96
86005100	1"	109	46	56	65	25	646	30	12	48
86005114	1"1/4	125	57	62	65	32	873	25	8	32
<b>BLACK VERSION</b>										
81005012	1/2"	82	31	46	60	15	248	50	36	144
81005034	3/4"	94	38	49	60	20	400	40	24	96
81005100	1"	109	46	56	65	25	646	30	12	48
81005114	1"1/4	125	57	62	65	32	873	25	8	32

GP 2240  
EVOLUTION



Female-Revolving nut nickel-plated ball valve, with painted aluminum butterfly handle.



A

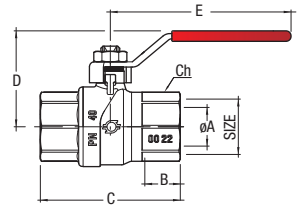
CODE	Size	A	A1	øB mm	C mm	D mm	E mm	F mm	G mm	H mm	Ch1 mm	gr	PN	Pack pcs/box	Master pcs/box
<b>BLUE VERSION</b>															
6067R077	1/2"x3/4"	1/2"	3/4"	15	17	46	60	73,2	28,5	44,7	25	230	50	30	120
6067R080	3/4"x3/4"	3/4"	3/4"	20	18,3	49,5	60	81,9	33,5	48,4	31	327	40	18	72
6067R081	3/4"x1"	3/4"	1"	20	18,3	49,5	60	82,3	33,5	48,8	31	340	40	18	72
6067R085	1"x1"1/4	1"	1"1/4	25	22	56	65	93,5	40	53,5	38	535	30	12	48
<b>RED VERSION</b>															
6068R077	1/2"x3/4"	1/2"	3/4"	15	17	46	60	73,2	28,5	44,7	25	230	50	30	120
6068R080	3/4"x3/4"	3/4"	3/4"	20	18,3	49,5	60	81,9	33,5	48,4	31	327	40	18	72
6068R081	3/4"x1"	3/4"	1"	20	18,3	49,5	60	82,3	33,5	48,8	31	340	40	18	72
6068R085	1"x1"1/4	1"	1"1/4	25	22	56	65	93,5	40	53,5	38	535	30	12	48

GP 2240  
EVOLUTION



Female-Female nickel-plated ball valve, with red plastified steel lever handle.

(\*) Note: 4" valves are with threading ISO 228/1 and are supplied with levers disassembled.  
Article available while stocks last.

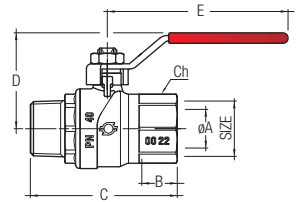


CODE	Size	DN	øA mm	B mm	C mm	D mm	E mm	Ch mm	gr	PN	Pack pcs/box	Master pcs/box
80008014	1/4"	8	10	12,5	45	41	86	20	154	50	36	144
80008038	3/8"	10	10	13	47	41	86	20	158	50	36	144
80008012	1/2"	15	15	17	56	43	86	25	195	50	36	144
80008034	3/4"	20	20	18,3	67	46	86	31	297	40	24	96
80008100	1"	25	25	22	80	58	112	38	495	30	12	48
80008114	1"1/4	32	32	24	94	63	112	47	700	25	8	32
80008112	1"1/2	40	40	24	103	73	143	53	1070	20	4	16
80008200	2"	50	50	28,5	126	81	143	66	1755	20	4	16
08008830	4" (*)	100	100	29	185,5	149	251	124	8030	15	1	2

GP 2240  
EVOLUTION



Male-Female nickel-plated ball valve, with red plastified steel lever handle.

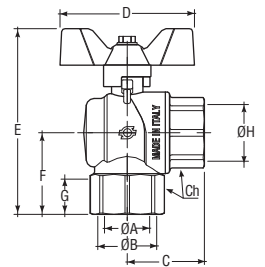


CODE	Size	DN	øA mm	B mm	C mm	D mm	E mm	Ch mm	gr	PN	Pack pcs/box	Master pcs/box
80008514	1/4"	8	10	12,5	51	41	86	20	154	50	36	144
80008538	3/8"	10	10	13	52	41	86	20	158	50	36	144
80008512	1/2"	15	15	17	60	43	86	25	195	50	36	144
80008534	3/4"	20	20	18,3	70	46	86	31	297	40	24	96
80008600	1"	25	25	22	83	58	112	38	495	30	12	48
80008614	1"1/4	32	32	24	97	63	112	47	700	25	8	32
80008612	1"1/2	40	40	24	110	73	143	53	1070	20	4	16
80008700	2"	50	50	28,5	134	81	143	66	1755	20	4	16

GP 2240  
EVOLUTION

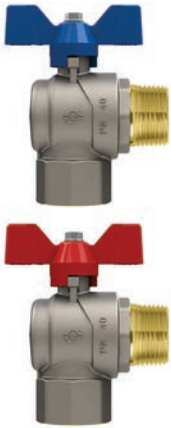


Female-Female nickel-plated ball angle valve, with painted aluminium butterfly handle.

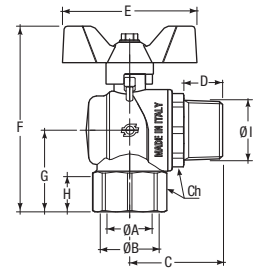


CODE	Size	øA mm	B mm	C mm	D mm	E mm	F mm	G mm	H mm	Ch mm	gr	Pack pcs/box	Master pcs/box
<b>BLUE VERSION</b>													
6770R104	1/2"x1/2"	15	1/2"	30	60	77,3	32,5	17	1/2"	25	196	36	144
6770R105	3/4"x3/4"	20	3/4"	34,5	60	86,6	38	18,3	3/4"	31	307	24	96
6770R106	1"x1"	25	1"	41,5	65	99,5	45	22	1"	38	505	12	48
6770R107	1"1/4x1"1/4	32	1"1/4	48,5	65	113	53	24	1"1/4	47	807	8	32
<b>RED VERSION</b>													
6778R104	1/2"x1/2"	15	1/2"	30	60	77,3	32,5	17	1/2"	25	196	36	144
6778R105	3/4"x3/4"	20	3/4"	34,5	60	86,6	38	18,3	3/4"	31	307	24	96
6778R106	1"x1"	25	1"	41,5	65	99,5	45	22	1"	38	505	12	48
6778R107	1"1/4x1"1/4	32	1"1/4	48,5	65	113	53	24	1"1/4	47	807	8	32

GP 2240  
EVOLUTION



Female-Male nickel-plated ball angle valve, with painted aluminium butterfly handle.

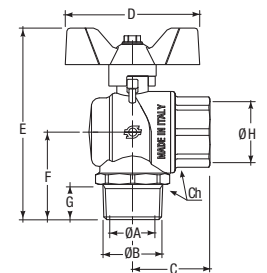


CODE	Size	A mm	B	C mm	D mm	E mm	F mm	G mm	H mm	I	Ch mm	gr	Pack pcs/box	Master pcs/box
<b>BLUE VERSION</b>														
6771R104	1/2"x1/2"	15	1/2"	35,5	14,8	60	77,3	32,5	17	1/2"	25	208	36	144
6771R105	3/4"x3/4"	20	3/4"	40,5	16,5	60	86,6	38	18,3	3/4"	31	319	24	96
6771R106	1"x1"	25	1"	47,5	19,5	65	99,5	45	22	1"	38	535	12	48
<b>RED VERSION</b>														
6779R104	1/2"x1/2"	15	1/2"	35,5	14,8	60	77,3	32,5	17	1/2"	25	208	36	144
6779R105	3/4"x3/4"	20	3/4"	40,5	16,5	60	86,6	38	18,3	3/4"	31	319	24	96
6779R106	1"x1"	25	1"	47,5	19,5	65	99,5	45	22	1"	38	535	12	48

GP 2240  
EVOLUTION

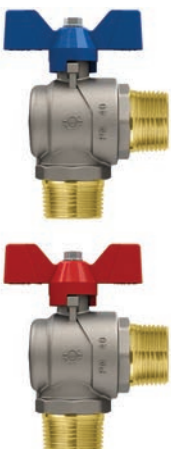


Male-Female nickel-plated ball angle valve, with painted aluminium butterfly handle.

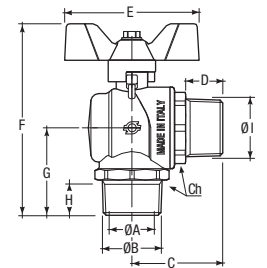


CODE	Size	A mm	B	C mm	D mm	E mm	F mm	G mm	H mm	Ch mm	gr	Pack pcs/box	Master pcs/box
<b>BLUE VERSION</b>													
6772R104	1/2"x1/2"	15	1/2"	30	60	79,8	35	14,8	1/2"	25	198	36	144
6772R105	3/4"x3/4"	20	3/4"	34,5	60	89,6	41	16,5	3/4"	31	309	24	96
6772R106	1"x1"	25	1"	41,5	65	102	47,5	19,5	1"	38	513	12	48
<b>RED VERSION</b>													
6780R104	1/2"x1/2"	15	1/2"	30	60	79,8	35	14,8	1/2"	25	198	36	144
6780R105	3/4"x3/4"	20	3/4"	34,5	60	89,6	41	16,5	3/4"	31	309	24	96
6780R106	1"x1"	25	1"	41,5	65	102	47,5	19,5	1"	38	513	12	48

GP 2240  
EVOLUTION



Male-Male nickel-plated ball angle valve, with painted aluminium butterfly handle.

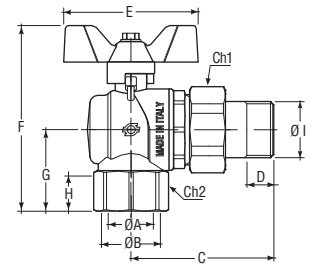


CODE	Size	A mm	B	C mm	D mm	E mm	F mm	G mm	H mm	I	Ch mm	gr	Pack pcs/box	Master pcs/box
<b>BLUE VERSION</b>														
6773R104	1/2"x1/2"	15	1/2"	35,5	14,8	60	79,8	35	14,8	1/2"	25	210	36	144
6773R105	3/4"x3/4"	20	3/4"	40,5	16,5	60	89,6	41	16,5	3/4"	31	321	24	96
6773R106	1"x1"	25	1"	47,5	19,5	65	102	47,5	19,5	1"	38	543	12	48
<b>RED VERSION</b>														
6781R104	1/2"x1/2"	15	1/2"	35,5	14,8	60	79,8	35	14,8	1/2"	25	210	36	144
6781R105	3/4"x3/4"	20	3/4"	40,5	16,5	60	89,6	41	16,5	3/4"	31	321	24	96
6781R106	1"x1"	25	1"	47,5	19,5	65	102	47,5	19,5	1"	38	543	12	48

GP 2240  
EVOLUTION



Female-Pipe union nickel-plated ball angle valve, with painted aluminium butterfly handle.



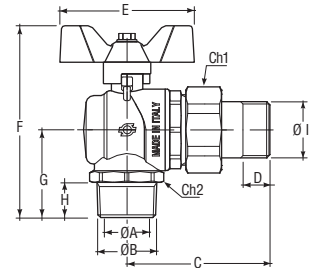
**A**

CODE	Size	A mm	B	C mm	D mm	E mm	F mm	G mm	H mm	I	Ch1 mm	Ch2 mm	gr	Pack pcs/box	Master pcs/box
<b>BLUE VERSION</b>															
6774R076	1/2"x1/2"	15	1/2"	56,5	10	60	77,3	32,5	17	1/2"	30	25	273	30	120
6774R080	3/4"x3/4"	20	3/4"	63,5	12	60	86,6	38	18,3	3/4"	37	31	425	18	72
6774R084	1"x1"	25	1"	73,5	14	65	99,5	45	22	1"	46	38	690	10	40
<b>RED VERSION</b>															
6782R076	1/2"x1/2"	15	1/2"	56,5	10	60	77,3	32,5	17	1/2"	30	25	273	30	120
6782R080	3/4"x3/4"	20	3/4"	63,5	12	60	86,6	38	18,3	3/4"	37	31	425	18	72
6782R084	1"x1"	25	1"	73,5	14	65	99,5	45	22	1"	46	38	690	10	40

GP 2240  
EVOLUTION



Male-Pipe union nickel-plated ball angle valve, with painted aluminium butterfly handle.



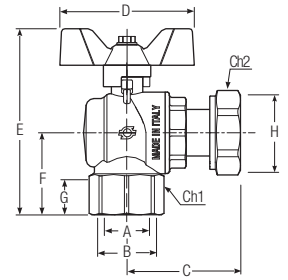
**A**

CODE	Size	A mm	B	C mm	D mm	E mm	F mm	G mm	H mm	I	Ch1 mm	Ch2 mm	gr	Pack pcs/box	Master pcs/box
<b>BLUE VERSION</b>															
6775R076	1/2"x1/2"	15	1/2"	56,5	10	60	79,8	35	14,8	1/2"	30	25	275	30	120
6775R080	3/4"x3/4"	20	3/4"	63,5	12	60	89,6	41	16,5	3/4"	37	31	428	18	72
6775R084	1"x1"	25	1"	73,5	14	65	102	47,5	19,5	1"	46	38	697	10	40
<b>RED VERSION</b>															
6783R076	1/2"x1/2"	15	1/2"	56,5	10	60	79,8	35	14,8	1/2"	30	25	275	30	120
6783R080	3/4"x3/4"	20	3/4"	63,5	12	60	89,6	41	16,5	3/4"	37	31	428	18	72
6783R084	1"x1"	25	1"	73,5	14	65	102	47,5	19,5	1"	46	38	697	10	40

GP 2240  
EVOLUTION



Female-Revolving nut nickel-plated ball angle valve, with painted aluminium butterfly handle.

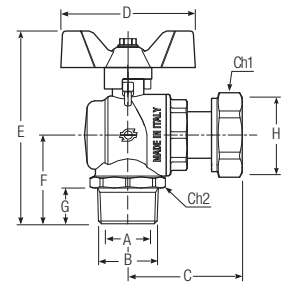


CODE	Size	A mm	B mm	C mm	D mm	E mm	F mm	G mm	H mm	Ch1 mm	Ch2 mm	gr	PN	Pack pcs/box	Master pcs/box
<b>BLUE VERSION</b>															
6069R077	1/2"Fx3/4"D	15	1/2"	47,8	60	77,3	32,5	17	3/4"	25	32	253	50	30	120
6069R080	3/4"Fx3/4"D	20	3/4"	52,3	60	86,6	38	18,3	3/4"	31	32	361	40	18	72
6069R081	3/4"Fx1"D	20	3/4"	52,8	60	86,6	38	18,3	1"	31	38	370	40	18	72
6069R085	1"Fx1"1/4 D	25	1"	58,2	65	99,5	45	22	1"1/4	38	47	580	30	10	40
<b>RED VERSION</b>															
6070R077	1/2"Fx3/4"D	15	1/2"	47,8	60	77,3	32,5	17	3/4"	25	32	253	50	30	120
6070R080	3/4"Fx3/4"D	20	3/4"	52,3	60	86,6	38	18,3	3/4"	31	32	361	40	18	72
6070R081	3/4"Fx1"D	20	3/4"	52,8	60	86,6	38	18,3	1"	31	38	370	40	18	72
6070R085	1"Fx1"1/4 D	25	1"	58,2	65	99,5	45	22	1"1/4	38	47	580	30	10	40

GP 2240  
EVOLUTION



Male-Revolving nut nickel-plated ball angle valve, with painted aluminium butterfly handle.



CODE	Size	A mm	B mm	C mm	D mm	E mm	F mm	G mm	H mm	Ch1 mm	Ch2 mm	gr	Pack pcs/box	Master pcs/box	
<b>BLUE VERSION</b>															
6071R077	1/2"Mx3/4"D	15	1/2"	47,8	60	79,8	35	14,8	3/4"	25	32	253	30	120	
6071R080	3/4"Mx3/4"D	20	3/4"	52,3	60	89,6	41	16,5	3/4"	31	32	364	18	72	
6071R081	3/4"Mx1"D	20	3/4"	52,8	60	89,6	41	16,5	1"	31	38	374	18	72	
6071R085	1"Mx1"1/4 D	25	1"	58,2	65	102	47,5	19,5	1"1/4	38	47	598	10	40	
<b>RED VERSION</b>															
6072R077	1/2"Mx3/4"D	15	1/2"	47,8	60	79,8	35	14,8	3/4"	25	32	253	30	120	
6072R080	3/4"Mx3/4"D	20	3/4"	52,3	60	89,6	41	16,5	3/4"	31	32	364	18	72	
6072R081	3/4"Mx1"D	20	3/4"	52,8	60	89,6	41	16,5	1"	31	38	374	18	72	
6072R085	1"Mx1"1/4 D	25	1"	58,2	65	102	47,5	19,5	1"1/4	38	47	598	10	40	

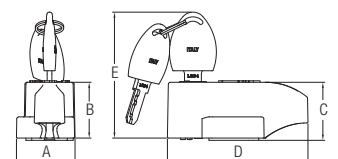
## HANDLES WITH SAFETY LOCKS FOR BALL VALVES

These handles, which can be used on FIV Evolution series ball valves with aluminium lever or butterfly, are equipped with a safety lock for use by the user and normally applicable to the water meter supplied from the network. The water flow can be cut off without using the key.

**NEW**

GP 2000  
ACCESSORIES

Blue butterfly with a safety lock.



CODE	Size	A mm	B mm	C mm	D mm	E mm	Pack pcs/box
4405R004	1/2" - 3/4"	31	29,5	31	74	67	1
4405R006	1" - 1"1/4	31	29,5	31	74	67	1

The Butterfly with lock is set to join only with the Evolution series with aluminium Butterfly or Lever handle.